

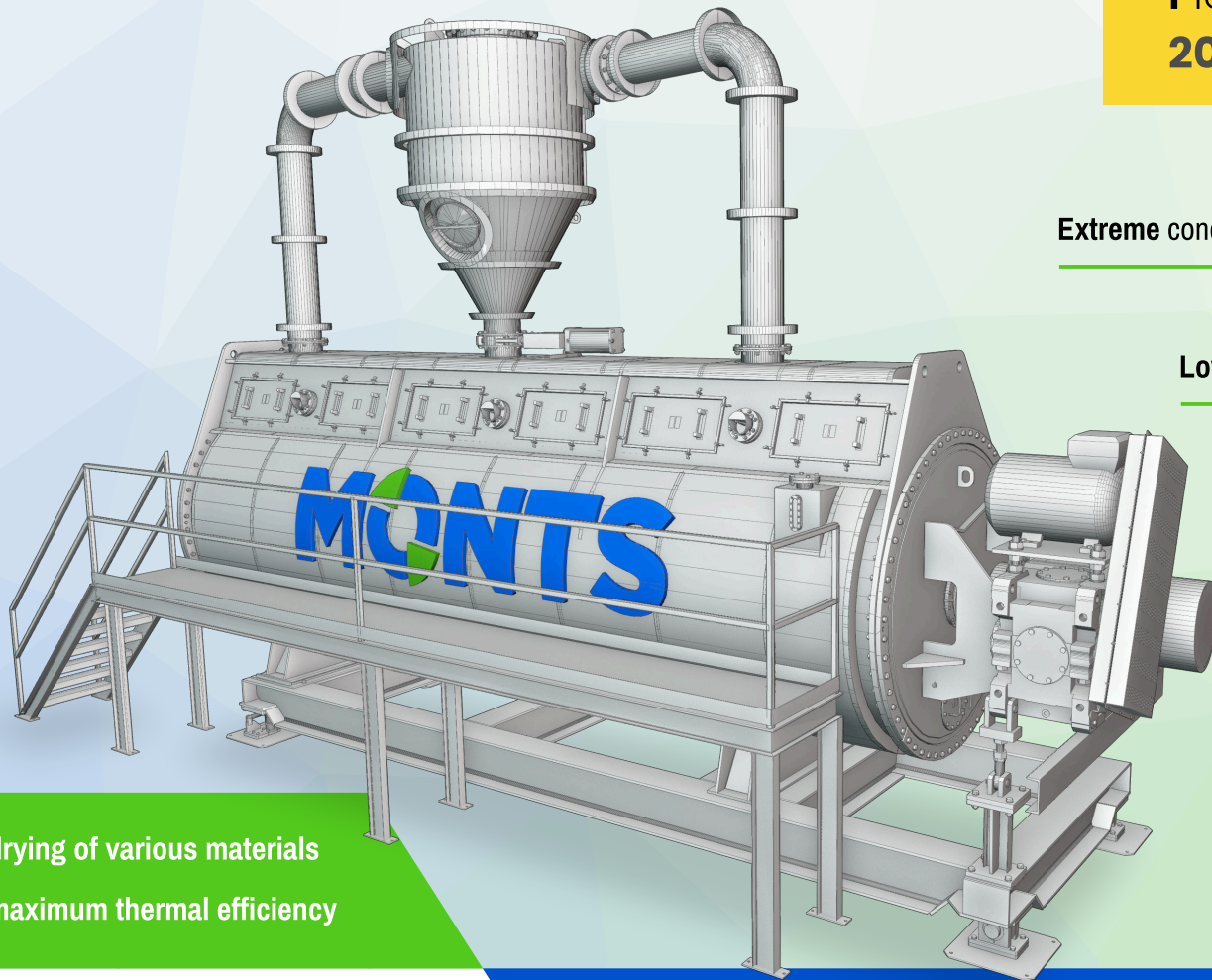
FlexiDesign
20-500 m²

Robust design

Extreme conditions resistance

Long service life

Low operating costs



- drying of various materials
- maximum thermal efficiency

EN 13445 • AD 2000 Merkblatt HP0 • ISO 9001 • ISO 3834-2

CONTINUOUS DISC DRYER **KDM**

Made of quality **stainless**
and **carbon** steels or their combination

Heating surface **20 - 500 m²**

Easy **serviceability**
thanks to sophisticated design

Spare parts and consumables
for the **entire service life**

Wide range of **accessories**

Repair and support **services**

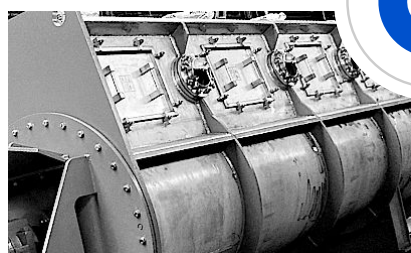
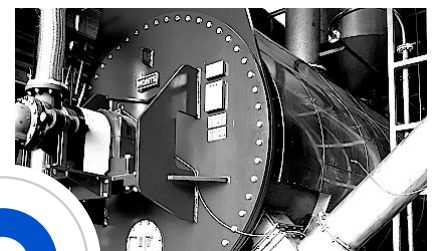
Tradition and long **experience** in the industry

Made in the **Czech Republic** from
high quality **European materials**



Application:

- **animal by-products**
(offal, blood, fat tissue, bones, skin, fish parts, etc.)
- **larvae** from insect protein farms
- industrial **sewage sludge** and other raw materials containing water



🌐 monts.cz

☎ +420 494 940 321

✉ sales@monts.cz

